

WHY WE ARE HERE

We provide an holistic education that focuses on high performance, academic excellence, positive masculinity (+M), and character strength within a supportive and nurturing environment.

WHAT WE STAND FOR

Our values of passion, integrity, respect and accountability are underpinned by Anglican principles and an application of kindness.

WHO WE ARE HERE FOR

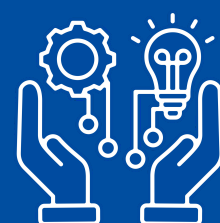
Our primary commitment is to the boys while ensuring our staff, parents and alumni are united by common goals, values and mutual support, creating a strong and cohesive community.

OUR ESSENTIALS



Learning

We prioritise academic engagement as the first amongst equals, with everyone having a role to play and the science of learning driving our shared understanding.



Creating

We prepare our students for the future by equipping them with skills in creative thinking and making for problem-solving and innovation.



Playing

We support our boys to take on challenges outside the classroom and learn the rules of the game as they strive for success through experiential learning and co-curricular activities.



Being

We encourage students to be authentic, motivated and connected through our positive masculinity (+M) and pastoral programs; practising respect and empathy for themselves and others.



**BRIGHTON
GRAMMAR**

— EST. 1882 —



OUR VISION

We are a single-campus school passionate about educating, developing, inspiring and guiding boys on their journey to adulthood.

OUR CURRENT WORK 2024-2027

OUR ENGINE



Staff

We prioritise the attraction, development and wellbeing of highly skilled staff to ensure exceptional educational outcomes for our students.



Culture

We promote high performance through an engaging and supportive environment that empowers students and staff while aligning with our school values.



Applied Research

Our evidence-informed approach led by the Crowther Centre focuses on school improvement, parent and community engagement.



Master Plan

Our strategic framework guides the development of campus infrastructure, ensuring state-of-the-art facilities to support academic excellence and student success.



Financials

We focus on prudent growth, resource management and strategic investments to support the long-term goals and stability of the school.



Systems Thinking

We implement technologies and processes to ensure long-term sustainability and efficiency that can adapt to changing environments.